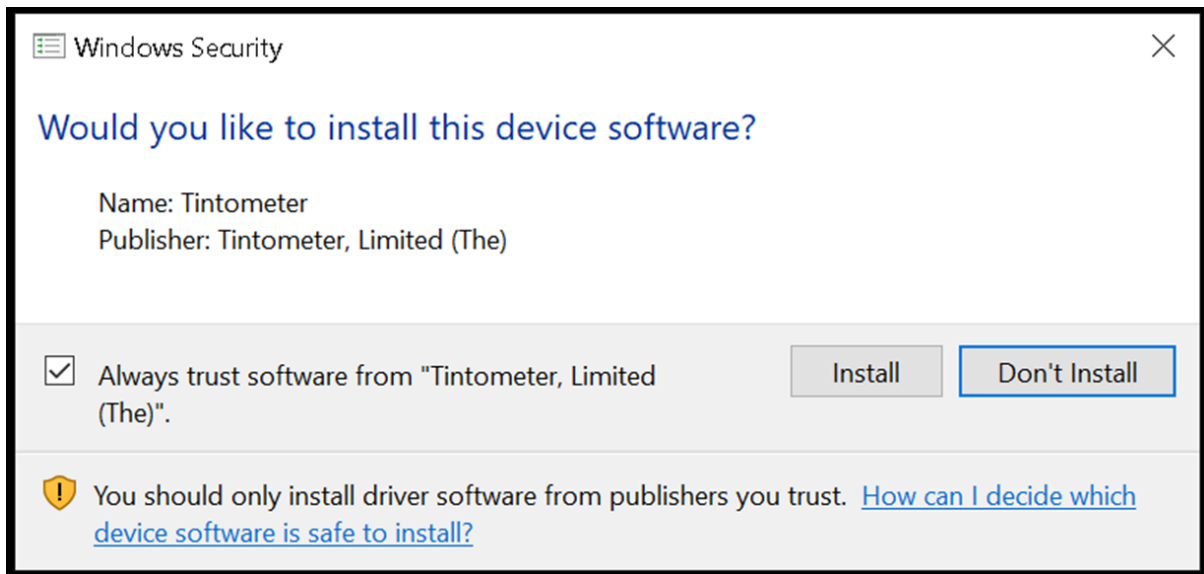


The Tintometer Ltd: Home of the Lovibond® Brand

Install PFXi Drivers in Windows 10:

1. Download the PFXi driver from http://linfo.co.uk/downloads/PFXi/PFXi_Driver_Signed_SHA2.zip
2. Unzip the driver files to a suitable directory.
3. Plug your PFXi into the computer and ensure it is powered on.
4. Windows should recognise the instrument as a PFX Series device and attempt to install drivers.
5. Type "Device Manager" into the search box and open the application.
6. Right click on PFXi and select "Update Driver".
7. Select "Browse my computer for driver Software" from the two options available.
8. Select "Browse" and locate the Folder the driver has been unzipped into.
9. Click Next.
10. You should see the Security warning to the left.
11. It will display similar to the example below:



12. Click on Install button.
13. Your drivers should now be installed and by running the PFXi Software and restarting your PFXi instrument they should connect.

Should you require any additional assistance please do not hesitate to contact us via support@lovibond.uk or calling us on +44 (0)1980 664 800